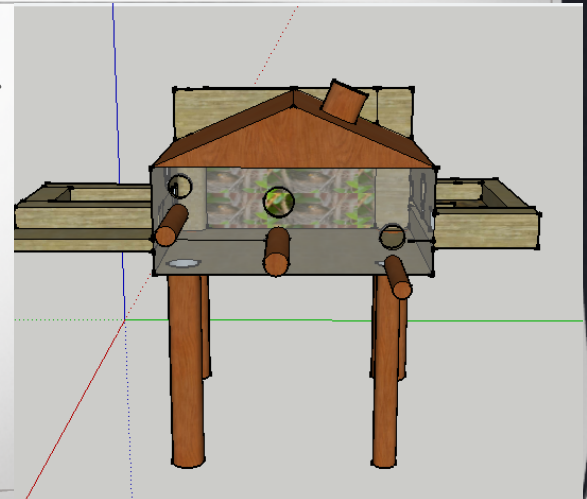


BIRD HOUSE

Micaela Tischendorf

DVC year 9

2015





Attribution-NonCommercial-NoDerivatives 4.0 International (CC BY-NC-ND 4.0)

This is a human-readable summary of (and not a substitute for) the [license](#).

[Disclaimer](#)

You are free to:

Share — copy and redistribute the material in any medium or format

The licensor cannot revoke these freedoms as long as you follow the license terms.

Under the following terms:



Attribution — You must give **appropriate credit**, provide a link to the license, and **indicate if changes were made**. You may do so in any reasonable manner, but not in any way that suggests the licensor endorses you or your use.



NonCommercial — You may not use the material for **commercial purposes**.



NoDerivatives — If you **remix, transform, or build upon** the material, you may not distribute the modified material.

No additional restrictions — You may not apply legal terms or **technological measures** that legally restrict others from doing anything the license permits.

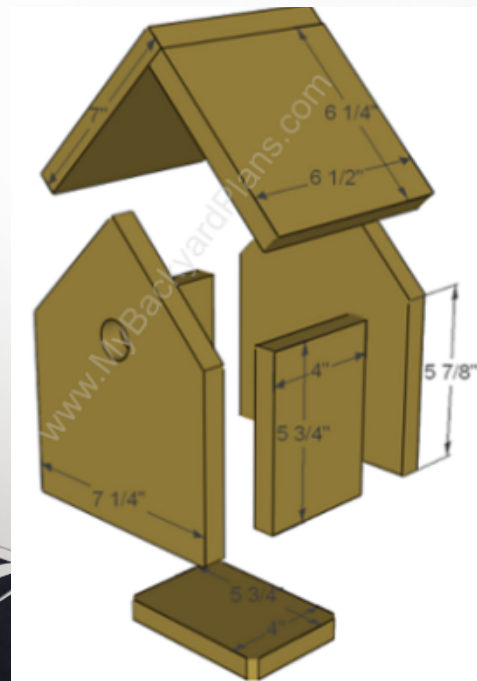
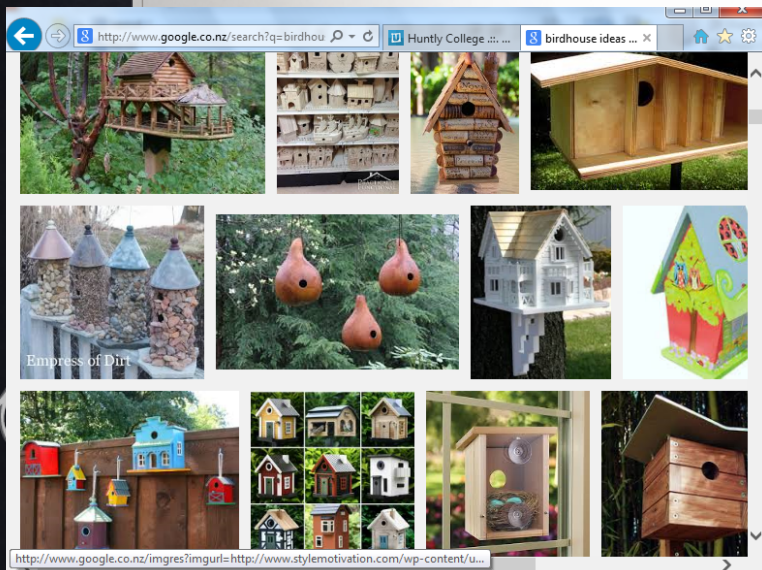
Notices:

You do not have to comply with the license for elements of the material in the public domain or where your use is permitted by an applicable **exception or limitation**.

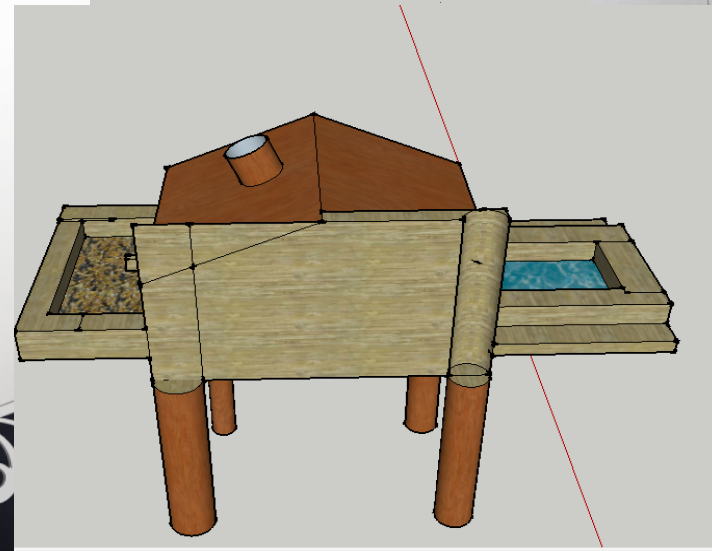
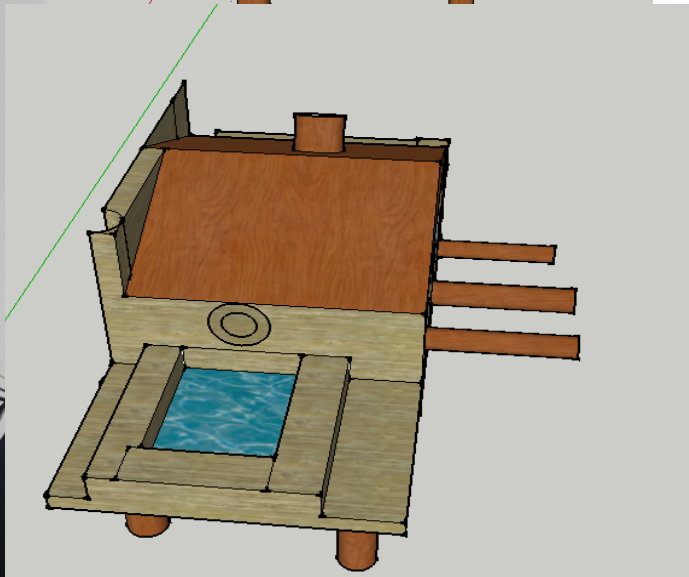
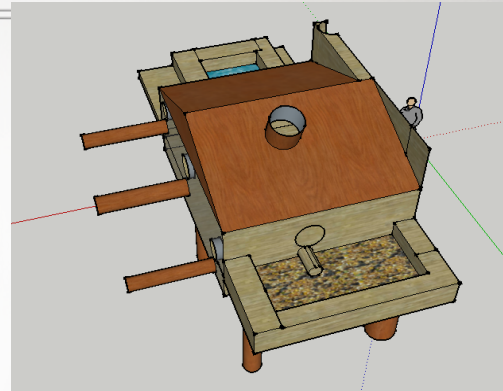
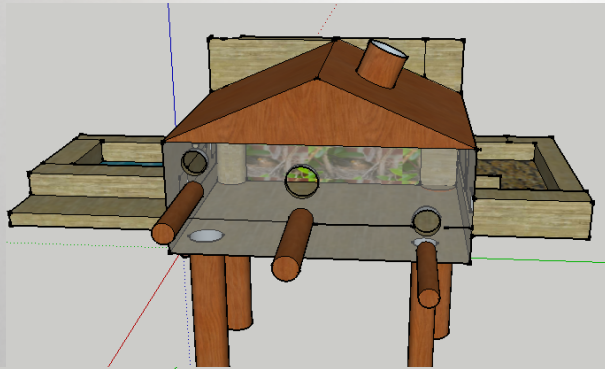
No warranties are given. The license may not give you all of the permissions necessary for your intended use. For example, other rights such as **publicity, privacy, or moral rights** may limit how you use the material.

RESEARCH:

I was thinking about how I wanted to display my bird house.
I decided to make it feel like a house,
I decided to use natural materials and add some extra details.



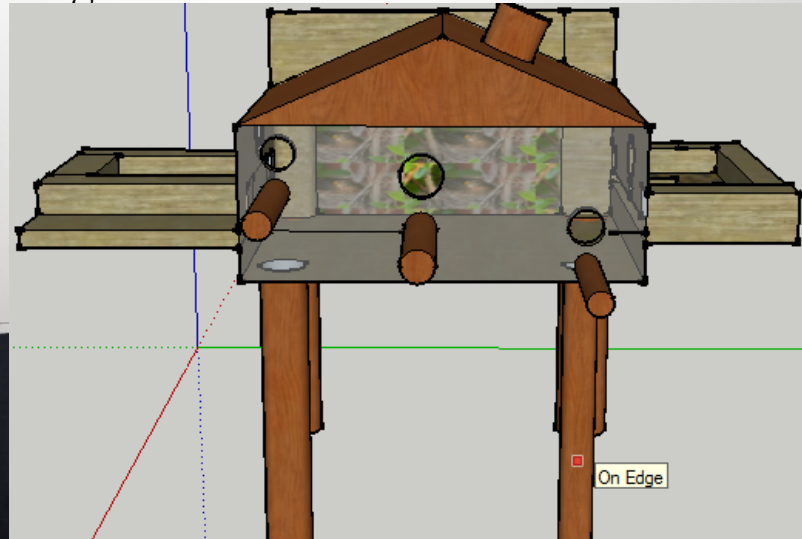
MY DESIGN ON SKETCHUP



MY THOUGHTS:

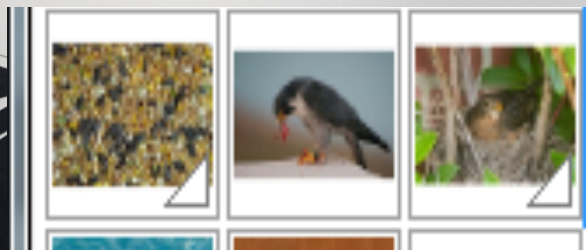
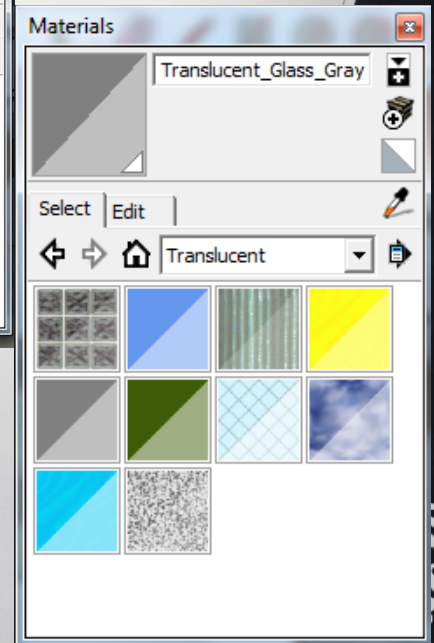
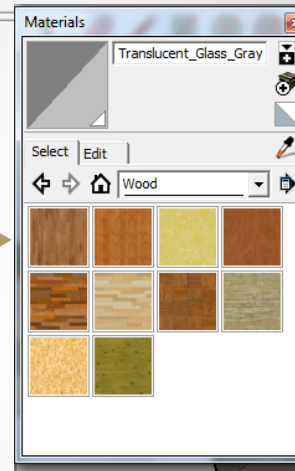
❖ During the making of my project my thoughts were all over the place I had no idea how I wanted it to look and how it was going to colour it.

In the end I decided to go with a more detailed texture...



TEXTURES:

- ❖ The textures I decided to use:
- ❖ Wood: Lumber buttjoined
- ❖ Cherry original
- ❖ And the extras:
- ❖ Glass Grey
- ❖ And three photos.





SOURCES

❖ Sketchup Pro 2013

❖ Internet explorer